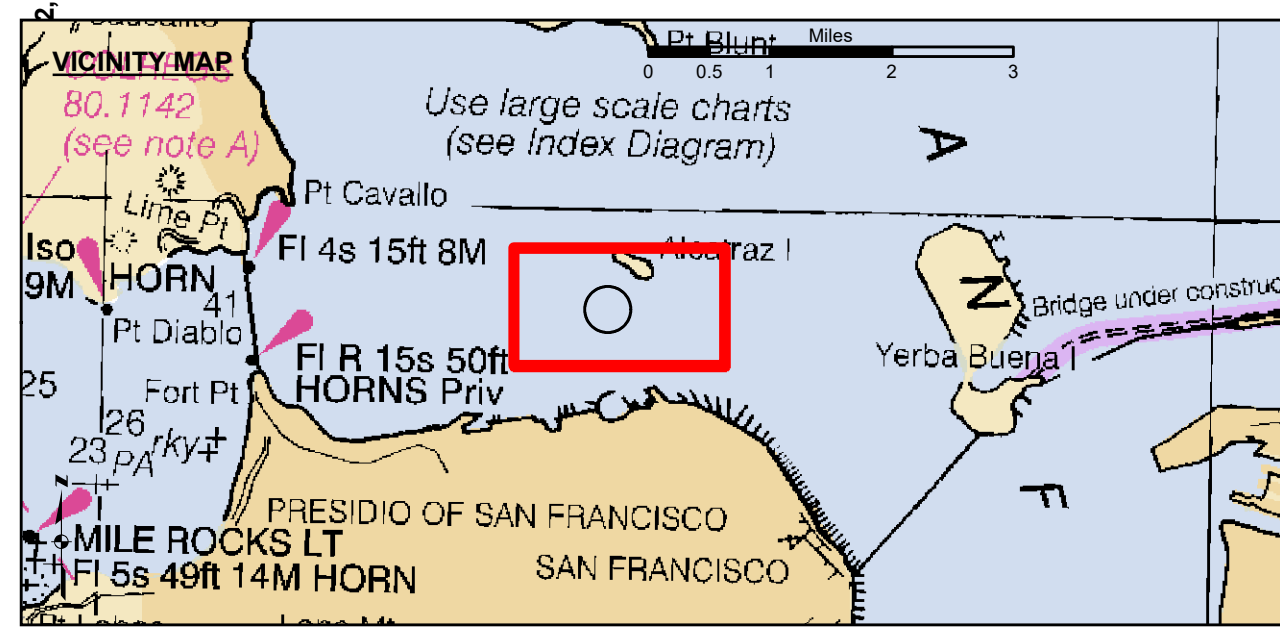
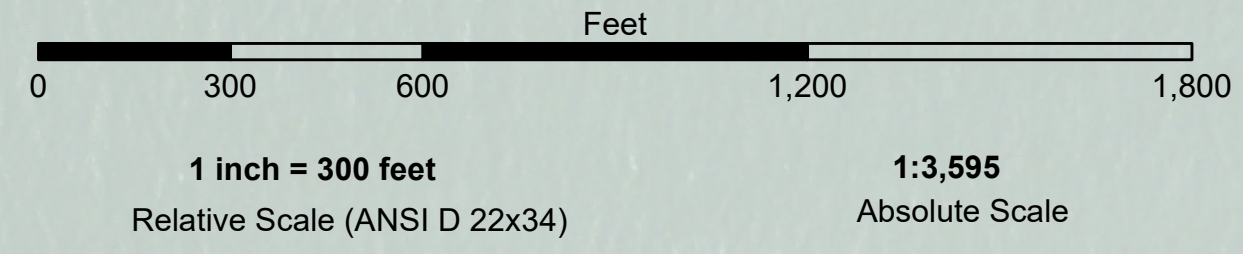


LAMBERT COORDINATES			
POINT	X	Y	
U.S.G.S. MON, 57	ELEV. - 14.00	6,005,367	2,123,290
TRANSMERICA BUILDING		6,011,912	2,117,586
ALCATRAZ DISPOSAL SITE - (SF-11)			
1,000 FT. RADIUS		6,005,935	2,127,235
ALCATRAZ LIGHT		6,008,552	2,129,010
ALCATRAZ BUOY		6,006,367	2,127,186



- Federal Navigation Channel
- Shoaling Area
- Placement Area
- Anchorage Area
- Wreck Area
- Submerged Wreck
- Zone_III_Angle_Points
- Beacon, General
- Obstruction Point
- Navigation Buoy
- Navigation Buoy
- Shoalest Sounding*
- Contour Lines
- Every 10' -20' to -120'

NOTES:
 HORIZONTAL COORDINATE SYSTEM:
 NORTH AMERICAN DATUM OF 1983 (NAD83). PROJECTED TO THE STATE PLANE COORDINATE SYSTEM (SPCS), CALIFORNIA ZONE III. DISTANCE UNITS IN U.S. SURVEY FEET.
 VERTICAL DATUM:
 SOUNDINGS ARE SHOWN IN FEET AND INDICATE DEPTHS BELOW MEAN LOWER LOW WATER.
 THE INFORMATION DEPICTED ON THIS MAP REPRESENTS THE RESULTS OF A SURVEY CONDUCTED ON THE DATE INDICATED AND CAN ONLY BE CONSIDERED TO REPRESENT THE GENERAL CONDITION EXISTING AT THAT TIME.
 BASE MAPS ARE USDA NAIP 2010.
 *SHOALEST SOUNDING PER QUARTER PER REACH

DRAWING NOT TO BE USED FOR NAVIGATION. ONLY CHANNEL CONDITION AT DATE OF SURVEY. THE LOCATION OF ALL NAVIGATION AIDS ARE BASED ON INFORMATION PROVIDED BY THE U.S. COAST GUARD. BUOY LOCATIONS REPRESENT THE POSITION OF THE SINKER ONLY.
 SOUNDINGS WERE TAKEN BY FATHOMETER AND ARE SHOWN TO THE NEAREST TENTH OF A FOOT. SOUNDINGS ARE BASED ON THE DATUM OF MEAN LOWER LOW WATER AT THE LOCALITY.
 SURVEYED BY THE CORPS OF ENGINEERS.
 THE PROJECT DEPTH IS -40 FEET AT MLLW.
 PLANE GRID AND COORDINATES ARE BASED ON LAMBERT PROJECTION, NAD 83, ZONE III CALIFORNIA AS DESCRIBED IN SPECIAL PUBLICATION NO. 235, PUBLISHED BY THE NATIONAL OCEAN SURVEY.
 HORIZONTAL GPS CONTROL:
 COAST GUARD D-BEACON
 BENCHMARK: 180 1936
 PID: HT0702
 MLLW = 3.972m(13.03ft)
 NOAA STATION 9414280
 TIDE GAUGE LOCATION: SAN FRANCISCO

US Army Corps of Engineers
 San Francisco District
 450 Golden Gate Ave
 San Francisco, CA 94102

DISCLAIMER
 The United States Government furnishes this information as a service to the public. It is not intended to be used for any purpose other than that for which it was prepared. The user is responsible for the results of any application of this information. The user is responsible for the results of any application of this information for other than its intended purpose.

Chart Date: Apr 09, 2019
Designed by: PDT
Plotted by: PDT
Checked by: PDT
Drawn by: PDT

PREPARED UNDER THE DIRECTION OF
 TRAVIS J. RAYFIELD
 LT COLONEL, C.E. DISTRICT ENGINEER
 Subject: Hydro Survey Team Leader
 Recommended: Chief Hydro Survey Section
 Approved: Chief Construction Branch

CALIFORNIA
 SAN PABLO BAY
 ALCATRAZ DISPOSAL SITE-SF11
 CONDITION SURVEY
 04 APRIL 2019

Sheet Reference Number 1 of 1